

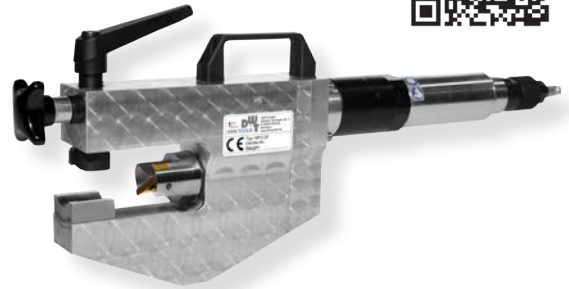
Video of application



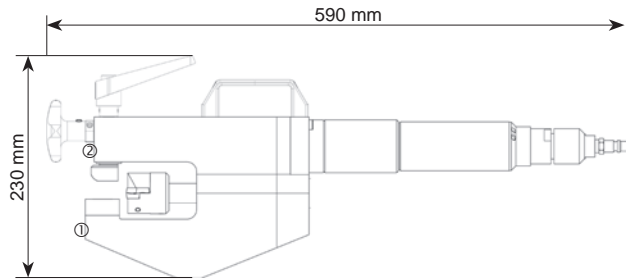
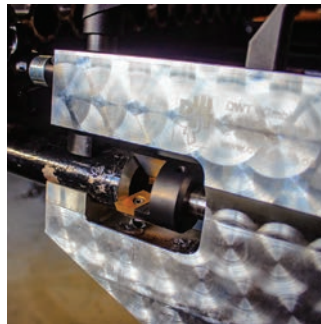
## Pipe beveler MF2-25

Clamping range OD-OD: 20 - 38 mm

The pipe beveler MF2-25 is exceptionally used for the preparation of pipe ends, bevelling of edges of individual pipes or membrane walls. The great advantage of this type is that membrane walls down to a size of Ø 38 mm can be bevelled with tool tip crown milling cutters. The minimum membrane wall width is only 40 mm!



### Dimensions



machine width below (1): 40 mm  
machine width above (2): 55 mm

### Specifications

Specifications MF2-25			Pneumatic Motor		
Working range ID-OD	12,5 - 38 mm	0,314 - 1,496"	Power	850 W	1,2 HP
Clamping range OD-OD	20 - 38 mm	0,787 - 1,496"	Air pressure	6 bar	87 psi
Max. wall-thickness	15 mm	0,59"	Air consumption	0,96 m <sup>3</sup> /min	33,9 cfm
Feed	25 mm	0,98"	Air hose connection	1/4"	1/4"
Weight with electric motor	7,6 kg	16,7 lb	Features	speed control	
Weight with pneumatic motor	6,4 kg	14,1 lb	Electric Motor		
Weld prep	facing, V-prep		Power consumption	1.500 W (110V/230V)	2,0 HP
Materials	steel, stainless steel, duplex, high alloyed		Features	restart and overload protection, speed adjustment, torque control	
Tooling	tool bits, TiN inserts, custom bits				
Machine body	Aluminium alloy				

### Accessories & additional options



Tools for MF2-25 from page 48



Tube fin removal from page 48