

# PIPE BEVELER MF3-25 XL

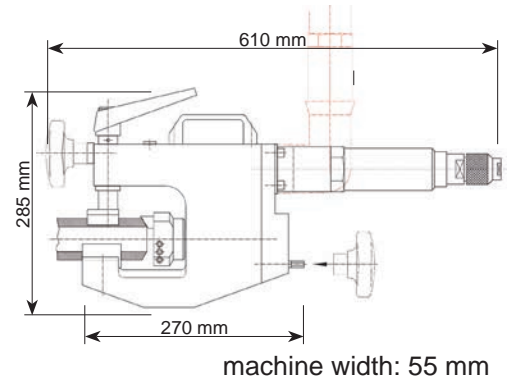
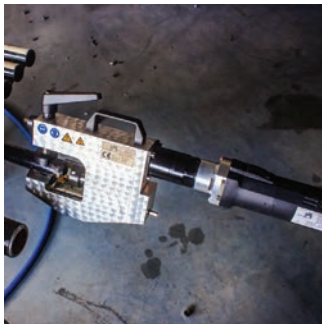
## Pipe beveler MF3-25 XL

Clamping range OD-OD: 20 - 76,1 mm

The Pipe Beveler MF3-25 XL is used for the preparation of pipe ends, i.e. cutting of welding edges at individual pipes or membrane walls. Because of its small dimension, it is particularly suitable for the preparation inside membrane wall. The machine can optionally be equipped with a pneumatic or an electric motor.



### Dimensions



### Specifications

Specifications MF3-25 XL			Pneumatic Motor		
Working range ID-OD	12,5 - 76,1 mm	0,496 - 2,996"	Power	850 W	1,2 HP
Clamping range OD-OD	20 - 76,1 mm	0,787 - 2,996"	Air pressure	6 bar	87 psi
Max. wall-thickness	15 mm	0,58"	Air consumption	0,96 m <sup>3</sup> /min	33,9 cfm
Feed	25 mm	0,59"	Air hose connection	1/4"	1/4"
Weight with electric motor	10 kg	21,2 lb	Features	Geschwindigkeitsregulierung	
Weight with pneumatic motor	8,8 kg	18,5 lb	<b>Electric Motor</b>		
Weld prep	facing, V-prep, J-prep, counter boring		Power consumption	1.500 W (110V/230V)	2,0 HP
Materials	steel, stainless steel, duplex, high alloyed		Features	restart and overload protection, speed adjustment, torque control	
Tooling	tool bits, TiN inserts, custom bits				
Machine body	Aluminium alloy				

### Accessories & additional options



Tools for MF4-R  
from page 48



Tube fin removal  
from page 48



Easy-to-fit  
Solutions



Angle drive